



GOOD MORNING

Have Good Trading Day

MONDAY



Price is what you pay.
Value is what you get.

- Warren Buffet



MARKET PLUSE

INDIAN INDICES

NAME	CMP	NET CH.	%
SENSEX	27214	+204	+0.76
NIFTY	8238	+58	+0.72

INDIAN ADR'S

SYMBOL	CLOSE	GAIN/ LOSS %
DRREDDY	65.45	+1.33
HDFCBANK	63.52	+1.19
ICICIBK	9.21	+1.54
INFY	18.04	+3.38
TATAMOTOR	29.23	-0.65
WIPRO	12.54	+0.72

FII AND MF ACTIVITY

SYMBOL	In Crs.
FIIs Eq (Provisional)	436.79
FIIs Index Future	-831.44
FIIs Index Options	217.48
FIIs Stock Future	-457.60
FIIs Stock Options	-22.37
DII's Eq (Provisional)	102.49

CURRENCY

RBI RATE	16-OCT-2015
RUPEE - \$	64.9697
EURO	73.9940
YEN 100	54.5400
GBP	100.5536

MARKET PLUSE

GLOBAL INDICES

NAME	CMP	NET CH.	%
DOW	17215	+74	+0.43
NASDAQ	4886	+16	+0.34
NIKKEI	18190	-101	-0.55
HANG SENG	23041	-26	-0.11
SGX NIFTY	8248	-12	-0.15

WORLD COMMODITIES

FUTURE	U\$\$	CHANGES
CRUDE	47.62	-0.10
NATURAL GAS	2.459	+0.029
GOLD	1173.7	-9.4
SILVER	15.930	-0.184
COPPER	2.3950	-0.0085

WORLD EVENTS

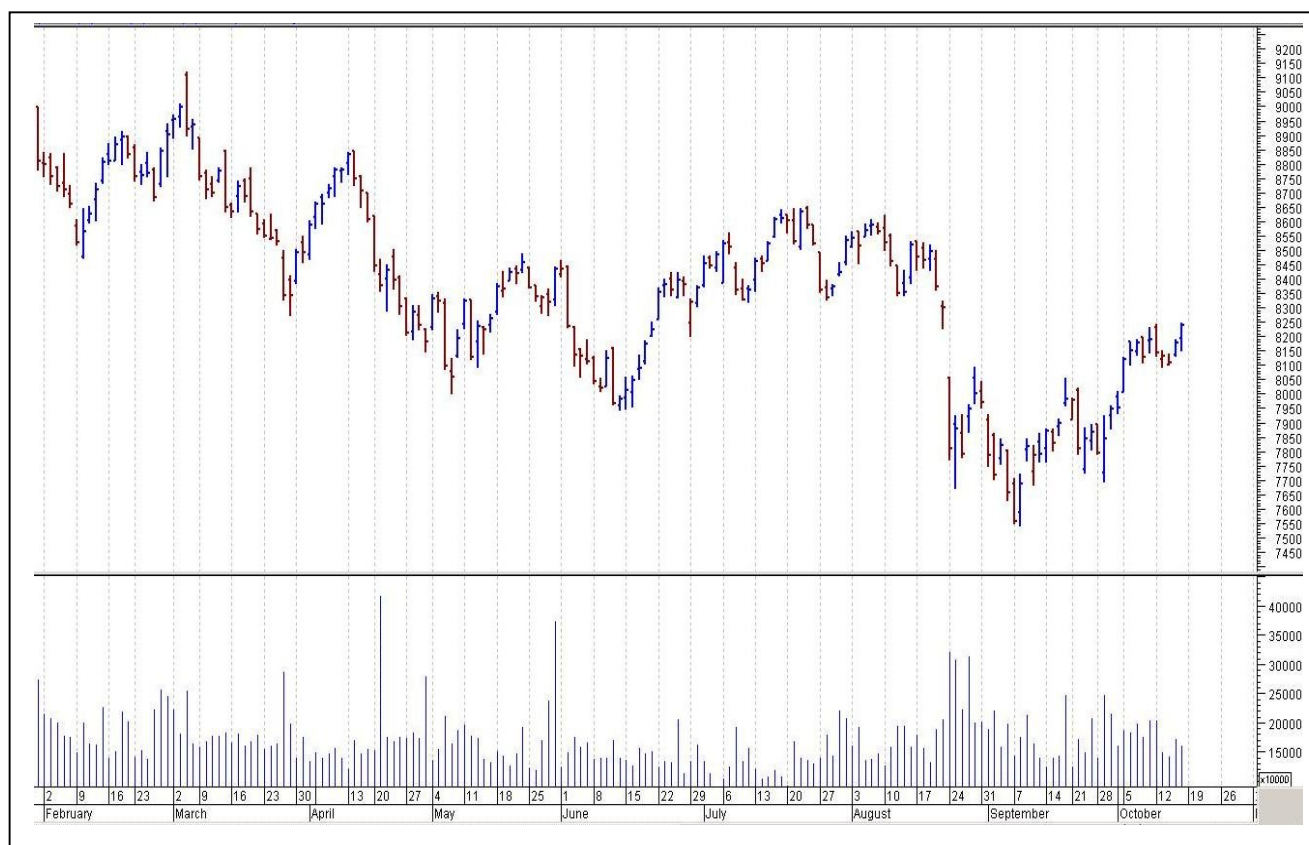
- US: NAHB Housing Market Index
- FOMC Member Lacker Speaks
- UK:NIL

TOP STORY

- Reliance Ind Q2 Standalone Net Profit At `6,561 Cr Vs `6,318 Cr. Standalone Total Income At `60,817 Cr Vs `65,817 Cr (QoQ). Standalone GRM At \$10.60/bbl Vs \$10.40/bbl
- Tata Metaliks Q2 Cons Net Profit Down 20.4% At `21.5 Cr Vs `27 Cr (YoY) Cons Total Income Down 6.5% At `327.9 Cr Vs `350.8 Cr (YoY)
- Tata Sponge Q2 Net Profit Down 74.7% At `5.7 Cr Vs `22.5 Cr (YoY) Total Income Down 27.8% At `152.3 Cr Vs `211.1 Cr (YoY)
- Crompton Greaves To Sell Kanjurmarg Land Parcel To Evie Real Estate Mumbai For `496.5 Cr
- Lanco Infra to receive `175 cr MAT refund: BS
- ONGC seeks premium gas price for new undeveloped block in KG basin (ET)
- Equitas Holdings Files DRHP With SEBI; IPO Includes Fresh Issue Of `600 Cr: Reuters
- NBCC Gets Order Worth `126.33 Cr In Telangana



NIFTY CHART



MARKET COMMENTARY

Indian equity markets witnessed a sharp turnaround rally on Friday, taking the benchmarks above the crucial levels from a sluggish trade. The local markets that bucking the trends remained in negative terrain for most part of the day suddenly spiked up in final hours to end near the highs of the day. Earlier, the stock markets edged lower, heading for their first weekly loss in three, on continued concerns about earnings and weighed down by report of India's merchandise exports contracting for the 10th month in a row, declining by 24.33 percent in September to \$21.84 billion. Though, the imports too shrank 25.42 percent to \$32.32 billion in September on yearly basis, thus narrowing the trade gap to 10.47 billion from \$ 14.47 billion recorded in the same month of 2014. For today's trade Nifty likely to trade in the range between 8250 – 8265 in the upper side and 8210 – 8190 in the lower side.

MARKET LEVELS

	CMP	SUPPORT LEVELS				RESISTANCE LEVELS			
NIFTY	8238	8210	8190	8150	8110	8250	8265	8280	8320
USDINR	64.93	64.87	64.8	64.75	64.6	65.01	65.05	65.15	65.25



FUTURES CORNER

SCRIPS	CLOSE	SUPPORT	TARGET		REMARKS
		STOP LOSS	T1	T2	
TVSMOTORS	247.1	245	252	256.8	TRADING CALL
VOLTAS	282.3	280	288	292.8	TRADING CALL
ASIANPAINTS	880	874	891	898	TRADING CALL

EQUITY CORNER

SCRIPS	CLOSE	SUPPORT	TARGET		REMARKS
		STOP LOSS	T1	T2	
ACE	46.1	45	49	51	TRADING CALL
SHIVTEX	55.7	53.5	58	61	TRADING CALL

DELIVERY BASED CALL / INVESTMENT CALL

SCRIPS	CMP	SUPPORT	TARGET		REMARK
		STOP LOSS	T1	T2	

BULK DEALS (BSE)

SCRIP	CLIENT NAME	BUY/SELL	QUANTITY	PRICE
HGS	MERRILL LYNCH CAPITAL MARKETS ESPANA SA SV	B	367,846	460
HGS	CREDIT SUISSE (SINGAPORE) LIMITED A/C CREDIT SUISSE (SINGAPORE)	S	367,846	460

BULK DEALS (NSE)

SCRIP	CLIENT NAME	BUY/SELL	QUANTITY	PRICE
NIL				

SCRIP'S IN F&O BAN

(To resume for normal trading below 80% of market wide limit required)

NIL



NIFTY 50 STOCKS: SUPPORT & RESISTANCE						
Symbol	Close	Support 1	Support 2	Pivot Point	Resistance1	Resistance2
ACC	1393.70	1372.63	1351.57	1386.27	1407.33	1420.97
ADANI PORTS	323.70	318.87	314.03	324.88	329.72	335.73
AMBUJACEM	212.15	209.42	206.68	212.08	214.82	217.48
ASIANPAINT	882.50	870.33	858.17	877.77	889.93	897.37
AXISBANK	504.65	494.87	485.08	501.18	510.97	517.28
BAJAJ-AUTO	2461.50	2435.78	2410.07	2461.77	2487.48	2513.47
BANKBARODA	177.70	175.27	172.83	177.53	179.97	182.23
BHARTIARTL	349.65	342.95	336.25	347.70	354.40	359.15
BHEL	213.50	210.87	208.23	212.43	215.07	216.63
BOSCH LTD	21067.55	20911.87	20756.18	21095.68	21251.37	21435.18
BPCL	911.25	901.53	891.82	908.12	917.83	924.42
CAIRN	160.05	157.68	155.32	159.52	161.88	163.72
CIPLA	679.45	672.13	664.82	676.32	683.63	687.82
COALINDIA	338.60	334.97	331.33	338.88	342.52	346.43
DRREDDY	4264.95	4190.28	4115.62	4234.92	4309.58	4354.22
GAIL	325.00	321.87	318.73	324.33	327.47	329.93
GRASIM	3649.05	3621.00	3592.95	3642.50	3670.55	3692.05
HCLTECH	841.15	835.52	829.88	840.63	846.27	851.38
HDFC	1311.60	1291.53	1271.47	1303.67	1323.73	1335.87
HDFCBANK	1100.05	1089.53	1079.02	1095.52	1106.03	1112.02
HEROMOTOCO	2584.00	2565.20	2546.40	2577.60	2596.40	2608.80
HINDALCO	87.75	86.07	84.38	87.73	89.42	91.08
HINDUNILVR	784.65	780.80	776.95	785.85	789.70	794.75
ICICIBANK	290.05	284.17	278.28	288.43	294.32	298.58
IDEA	150.40	147.80	145.20	150.10	152.70	155.00
INDUSINDBK	962.70	953.17	943.63	959.58	969.12	975.53
INFY	1094.90	1089.47	1084.03	1095.43	1100.87	1106.83
ITC	348.80	344.87	340.93	347.43	351.37	353.93
KOTAKBANK	659.30	648.97	638.63	655.48	665.82	672.33
LT	1604.95	1568.70	1532.45	1588.80	1625.05	1645.15
LUPIN	2055.30	2027.78	2000.27	2062.72	2090.23	2125.17
M&M	1288.85	1273.08	1257.32	1284.02	1299.78	1310.72
MARUTI	4450.25	4400.53	4350.82	4430.77	4480.48	4510.72
NTPC	126.80	125.35	123.90	126.65	128.10	129.40
ONGC	264.10	258.97	253.83	262.13	267.27	270.43
PNB	138.35	136.18	134.02	137.67	139.83	141.32
POWERGRID	135.00	133.73	132.47	134.87	136.13	137.27
RELIANCE	912.15	905.63	899.12	910.22	916.73	921.32
SBIN	254.85	249.75	244.65	253.45	258.55	262.25
SUNPHARMA	889.45	882.97	876.48	887.48	893.97	898.48
TATAMOTORS	386.20	380.92	375.63	385.93	391.22	396.23
TATAPOWER	69.65	65.57	61.48	68.08	72.17	74.68
TATASTEEL	252.90	248.63	244.37	252.67	256.93	260.97
TCS	2473.75	2465.17	2456.58	2478.58	2487.17	2500.58
TECHM	545.80	542.20	538.60	546.85	550.45	555.10
ULTRACEMCO	2954.65	2912.77	2870.88	2943.88	2985.77	3016.88
VEDL	108.60	106.83	105.07	108.92	110.68	112.77
WIPRO	577.35	567.92	558.48	575.03	584.47	591.58
YESBANK	773.20	758.73	744.27	766.72	781.18	789.17
ZEEL	423.45	416.22	408.98	421.28	428.52	433.58



CORPORATE ACTION / BOARD MEETINGS

NSE Download Ref No :NSE/FAOP/3078:-Ajanta Pharmaceuticals Ltd to replace Aditya Birla Nuvo Ltd. In Nifty Midcap 50 Index w.e.f October 19, 2015

NSE Download Ref.No.:NSE/CML/30951:- Change in Name of the Company from Shiv-Vani Oil & Gas Exploration Services Limited to SVOGL Oil Gas and Energy Limited. Symbol will change from SHIV-VANI to SVOGL w.e.f. 23-Oct-2015

BOARD MEETINGS

COMPANY NAME	DATE	PURPOSE	RS. PER SH.
PGHH	19-Oct-15	Dividend	30.25
HINDUNILVR	19-Oct-15	Dividend	6.5
SARLAPOLY	21-Oct-15	Face Value Split From Rs 10 To Re 1	
SUNPHARMA	21-Oct-15	Annual General Meeting/ Dividend	3
RUBYMILLS	21-Oct-15	Bonus 1:1	
CRISIL	21-Oct-15	Dividend	
SASKEN	21-Oct-15	Dividend	
MINDTREE	21-Oct-15	Dividend	
HCLTECH	23-Oct-15	Dividend	
HATSUN	23-Oct-15	Dividend	
HINDZINC	23-Oct-15	Dividend	
TCS	23-Oct-15	Dividend	5.5
IRB	27-Oct-15	Dividend	
ASIANPAINT	28-Oct-15	Dividend	
CAPLIPOINT	29-Oct-15	Annual General Meeting/ Dividend	5
FOSECOIND	29-Oct-15	Dividend	
GODREJCP	30-Oct-15	Dividend	
SSWL	30-Oct-15	Dividend	
COLPAL	5-Nov-15	Dividend	
SHREECEM	5-Nov-15	Annual General Meeting/ Dividend	14
DABUR	5-Nov-15	Dividend	
PGHH	19-Oct-15	Dividend	30.25

NEWS & RUMOURS:

- Gold (Spot Dollar) major support = \$1155/\$1123 & Resistance = \$1209/\$1227.
- Crude oil range->\$43 to \$53.
- U.S. Stocks Fluctuate at Eight-Week High, Oil Adds to Slide: - U.S. shares fluctuated near an eight-week high amid gains in European and Asian equity markets, as a run of weaker-than-estimated economic reports boosted speculation central banks will maintain stimulus measures.
- Consumer Sentiment in U.S. Exceeds Forecast as Finances Improve: - Consumer sentiment climbed more than forecast in October as lower-income Americans projected wage gains will accelerate and falling energy prices helped stretch paychecks. The University of Michigan's preliminary consumer sentiment index for this month rose to 92.1, the first advance in four months, from 87.2 in September, a report showed Friday. The median projection in a Bloomberg survey called for 89.
- Trump: Janet Yellen Keeping Interest Rates Low as Political Favor to Obama: - The billionaire Republican presidential front-runner also said corporate inversions are on the rise.
- Oil prices climb on U.S. gasoline drawdown, snap week-long fall: - Crude oil futures rose on Friday to snap a week-long fall, as U.S. gasoline and distillate inventories dropped more than expected.
- PRECIOUS-Gold slips from 3-1/2 month high, but set for weekly gain: - Gold eased on Friday as a recovering dollar pulled prices from 3-1/2 month highs, but doubts over whether the Federal Reserve will press ahead with a U.S. rate rise this year kept the metal on track for a second weekly rise.

TRENDS & OUTLOOK – DATE: 19- Oct- 2015

PRECIOUS METALS:

COMMDITY (MCX)	S2	S1	PIVOT POINT	R1	R2
GOLD (Dec)	26600	26865	27134	27366	27727
SILVER (Dec)	35035	36201	37300	38270	39400

BASE METALS

COMMDITY (MCX)	S2	S1	PIVOT POINT	R1	R2
COPPER (Nov)	336	341	346	351	356
ZINC (Oct)	111.45	114.10	116.25	118.65	121.60
LEAD (Oct)	112.30	114.55	116.70	119.10	122.20
NICKEL (Oct)	654	671	686	707	725

ENERGY

COMMDITY (MCX)	S2	S1	PIVOT POINT	R1	R2
CRUDE OIL (Oct)	2829	2929	3030	3130	3270
NATURAL GAS (Oct)	148	154	158	165	171

DATE TALKS : TODAY'S ECONOMIC DATA :

GDP, Industrial Production, Retail Sales & Fixed Asset Investment of China, NBS Press Conference of China, German Buba Monthly Report, FOMC Member Brainard Speaks, NAHB Housing Market Index, FOMC Member Lacker Speaks.



Registered Office

Indira House, 3rd Floor, 5 Topiwala Lane,
Opp. Lemington Road Police Station, Grant Road (East), Mumbai - 400007.

Corporate Office

'Ramavat House' E-15, Saket Nagar, Indore - 452018 (M.P.)

Customer Care

Tel: +91-731-4097170/ 71/ 72/ 73/ 74 M. +91 93031 72345

Email: customercare@indiratrade.com www.indiratrade.com



INSTITUTIONAL DEALING UNIT

Africa House, 5, Topiwalla Lane, Lamington Road, Mumbai, 400007

Tel: +91 22 30080678 Fax : +91 22 23870767 Email : ie@indiratrade.com

Disclaimer

This report is for private circulation within the Indira Group. This report is strictly confidential and for information of the selected recipient only and may not be altered in any way, transmitted to, copied or distributed, in part or in whole, to any other person or to the media or reproduced in any form. This report should not be construed as an offer or solicitation to buy or sell any securities or any interest in securities. It does not constitute a personal recommendation or take into account the particular investment objectives, financial situations, or any such factor. The information, opinions estimates and forecasts contained here have been obtained from, or are based upon, sources we believe to be reliable, but no representation of warranty, express or implied, is made by us to their accuracy or completeness. Opinions expressed are our current opinions as of the date appearing on this material only and are subject to change without notice.